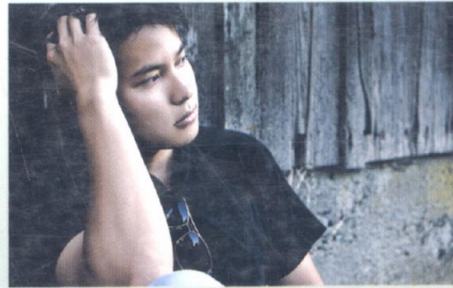




Online Files Available

# PSYCHIATRIC- MENTAL HEALTH NURSING



## An Interpersonal Approach

WY 160 J976P 2012



\* B 0 0 4 4 3 2 5 \*

Psychiatric-mental health nursing...

ห้องสมุดวิทยาลัยพยาบาลบรมราชชนนีนครราชสีมา

Joyce J. Fitzpatrick • Vickie L. Rogers

EDITORS

SPRINGER  PUBLISHING COMPANY

Foreword *Grayce M. Sills, PhD, RN, FAAN* xx  
Preface xxii

## I. THE PRACTICE OF PSYCHIATRIC-MENTAL HEALTH NURSING 3

1. Mental Health Trends and the Historical Role of the Psychiatric-Mental Health Nurse 3
  - Historical Overview of Mental Health and Mental Illness Care 4**
    - The Earliest Years 4*
    - The Eighteenth and Nineteenth Centuries 4*
    - The Twentieth Century 5*
    - Current Perspectives 6*
  - Evolution of Psychiatric-Mental Health Nursing 8**
    - Early Emergence of the Profession 8*
    - Continued Evolution 9*
  - Contemporary Psychiatric-Mental Health Nursing Practice 10**
    - Scope and Standards of Practice 10*
    - Phenomena of Concern 11*
    - Levels of Psychiatric-Mental Health Nursing Practice 11*
    - Roles and Functions of the PMHN 12*
2. Interpersonal Relationships: The Cornerstone of Psychiatric Nursing 17
  - Hildegard E. Peplau 18**
    - Biographical Background 18*
    - Peplau's Theory of Interpersonal Relationships 19*
    - Phases of the Interpersonal Process 19*
    - Roles 22*
    - Application to Psychiatric-Mental Health Nursing Practice 22*
  - Joyce Travelbee 23**

*Biographical Background 23*  
*Travelbee's Human to Human Relationship Theory 24*  
*Application to Psychiatric-Mental Health Nursing Practice 26*

3. Therapeutic Use of Self and Therapeutic Communication: From Self-Discovery to Interpersonal Skill Integration 31
  - The Concept of Self 32**
  - Theoretical Foundations for Self and the Therapeutic Use of Self 32**
    - Carl Rogers 33*
    - Other Theorists 33*
  - Development of the Therapeutic Use of Self 35**
    - Self-Awareness 35*
    - Self-Reflection 35*
  - Therapeutic Use of Self and the Interpersonal Process 37**
    - Importance of the Therapeutic Use of Self 37*
    - Positive Components of the Self 40*
  - Therapeutic Communication 41**
    - Therapeutic Communication Techniques 43*
    - Barriers to Effective Therapeutic Communication 46*
    - Therapeutic Communication Within Challenging Nursing Situations 47*
4. Boundary Management 53
  - Boundaries 54**
    - Establishment of Professional Boundaries 54*
    - Boundaries Within the Nurse-Patient Relationship 55*
  - Boundary Issues 56**
    - Boundary Testing 57*
    - Boundary Crossing Versus Boundary Violation 59*
  - Risk Factors for Unhealthy Nurse-Patient Boundaries 60**
  - Strategies for Maintaining Boundaries 62**

# CONTENTS

## II. HEALTH PROMOTION AND ILLNESS PREVENTION 67

### 5. Critical Thinking, Clinical Decision Making, and the Interpersonal Relationship 67

#### Critical Thinking and Clinical Decision

Making 68

*Domains of Critical Thinking* 68

*Elements Necessary for Critical Thinking* 68

*Framework for Critical Thinking and Clinical*

*Decision Making* 70

#### The Nursing Process 71

*The Nursing Process and the Interpersonal*

*Relationship* 71

*Planning and Implementation* 74

*Evaluation* 77

#### Implications for Psychiatric-Mental

Health Nursing 80

### 6. Crisis and Crisis Intervention 83

#### Stress Response 84

*General Adaptation Syndrome* 84

#### Crisis 84

*Characteristics of a Crisis* 86

*Factors Impacting an Individual's Response to*

*Crisis* 87

*Development of Crisis* 87

*Classification of Crises* 89

#### Crisis Intervention 89

*Nurses and Crisis Intervention: Historical*

*Perspectives* 90

*Nurses and Crisis Intervention: Current*

*Perspectives* 90

*Crisis Intervention and the Nursing Process* 91

*Nurse's Role During and After Community and*

*Global Disasters* 91

#### Impact of Dealing With Crises on

Psychiatric-Mental Health Nurses 96

### 7. Psychiatric Case Management 101

*Definition of Case Management* 102

*Historical Evolution of Psychiatric Case*

*Management* 103

*Case Management Models* 104

*Case Management Process* 105

*Goals and Principles of Case Management* 106

*Necessary Skills for Case Management* 106

*Essential Functions of the Case Management*

*Process* 108

*Interpersonal Perspectives for Case*

*Management* 110

*Roles of the Psychiatric-Mental Health Nurse Case*

*Manager* 110

*Practice Guidelines* 113

*Personal Practice Guidelines* 115

*Measurement of Quality in Case*

*Management* 115

### 8. Known Risk Factors for Prevalent Mental Illness and Nursing Interventions for Prevention 121

*The Nature of Risk Factors* 122

*Categories of Risk Factors* 122

*Protective Factors* 123

*The Stress-Vulnerability-Coping Model* 124

*Risk Factors for Major Psychiatric-Mental Health Disorders* 124

*Disorders of Infancy, Childhood, or*

*Adolescence* 124

*Schizophrenia* 125

*Affective Disorders* 126

*Substance-Related Disorders* 127

*Anxiety Disorders* 128

*Personality Disorders* 129

*The Interface of Psychiatric-Mental Health*

*Disorders and Medical Conditions* 129

*Factors Influencing Risk* 130

<i>Medical and Psychiatric-Mental Health Disorders as Risk Factors</i>	130
<b>The Interpersonal Process for Risk Reduction</b>	132
<i>Primary Prevention</i>	133
<i>Secondary Prevention</i>	133
<i>Tertiary Prevention</i>	136
<b>9. Systems Concepts and Working in Groups</b>	141
<b>General Systems Theory</b>	142
<i>Systems Theory and Nursing Theory</i>	142
<i>Systems Theory and Psychiatric-Mental Health Nursing</i>	144
<b>Groups and Group Therapy</b>	144
<i>Types of Therapeutic Groups</i>	145
<i>Group Process and Group Dynamics</i>	146
<i>Curative Factors of groups</i>	146
<i>Group Development</i>	149
<i>Role of the Group Leader or Facilitator</i>	149
<i>Roles of Group Members</i>	151
<i>Examples of Group Therapy</i>	152
<b>Family Psychotherapy</b>	153
<i>Models of Family Therapy</i>	154
<b>The Interpersonal Process and Group and Family Therapy</b>	156
<b>10. Theories of Mental Health and Illness: Psychodynamic, Social, Cognitive, Behavioral, Humanistic, and Biological Influences</b>	163
<b>Mental Illness</b>	164
<i>Evolution of Thinking About Mental Illness</i>	164
<i>The Current State of Mental Illness</i>	165
<b>Theories and Mental Illness</b>	165
<i>Psychodynamic Theories</i>	166
<i>Behavioral Theories</i>	168
<i>Cognitive Theories</i>	171
<i>Social Theories</i>	172
<i>Humanistic Theories</i>	173
<i>Biological Theories</i>	175
<b>III. ACUTE AND CHRONIC ILLNESS</b>	181
<b>11. Thought Disorders</b>	181
<b>Historical Perspectives</b>	182
<b>Epidemiology</b>	183
<i>Incidence</i>	183
<i>Prevalence</i>	184
<i>Mortality</i>	184
<i>Remission/Recovery</i>	184
<b>Diagnostic Criteria</b>	184
<i>Schizophrenia</i>	184
<i>Schizophreniform Disorder</i>	189
<i>Schizoaffective Disorder</i>	189
<i>Delusional Disorder</i>	189
<i>Brief Psychotic Disorder</i>	189
<i>Shared Psychotic Disorder</i>	189
<b>Etiology of SSD</b>	190
<i>Psychosocial Theories</i>	190
<i>Biological Theories</i>	191
<b>Treatment Options</b>	192
<i>Pharmacological Therapy</i>	192
<i>Electroconvulsive Therapy</i>	193
<i>Environmental Supports</i>	194
<i>Psychological Therapies</i>	195
<i>Assertive Community Treatment (ACT)</i>	195
<i>Social Therapies</i>	196
<b>Applying the Nursing Process From an Interpersonal Perspective</b>	199
<i>Strategies for Optimal Assessment: Therapeutic Use of Self</i>	199
<i>Self-Awareness</i>	199
<i>Implementing Effective Interventions: Timing and Pacing</i>	208
<i>Evaluation: Objective Critique of Interventions and Self-Reflection</i>	210
<b>12. Affective Disorders</b>	217
<b>Historical Perspectives</b>	218
<b>Epidemiology</b>	218
<b>Diagnostic Criteria</b>	219
<i>Major Depressive Disorder</i>	219
<i>Dysthymic Disorder</i>	219
<i>Bipolar I Disorder</i>	222
<i>Bipolar II Disorder</i>	222
<i>Cyclothymic Disorder</i>	222
<i>Suicide</i>	222
<b>Etiology of Affective Disorders</b>	222
<i>Psychosocial Theories</i>	222
<i>Biological Theories</i>	222
<b>Treatment Options</b>	223
<i>Psychopharmacology</i>	223
<i>Electroconvulsive Therapy</i>	230
<i>Cognitive Behavioral Therapy</i>	230
<b>Applying the Nursing Process From an Interpersonal Perspective</b>	231
<i>Strategies for Optimal Assessment: Therapeutic Use of Self</i>	231
<i>Diagnosing and Planning Appropriate Interventions: Meeting the Patient's Focused Needs</i>	234
<i>Implementing Effective Interventions: Timing and Pacing</i>	236
<i>Evaluating: Objective Critique of Interventions and Self-Reflection</i>	238

13. Anxiety Disorders 243
- Historical Perspectives 244
  - Epidemiology 245
    - Incidence 246
    - Morbidity and Mortality 246
  - Diagnostic Criteria 247
    - Panic Disorder 247
    - Obsessive-Compulsive Disorder (OCD) 247
    - Posttraumatic Stress Disorder (PTSD) 247
    - Generalized Anxiety Disorder (GAD) 247
    - Specific Phobia 251
    - Social Phobia 251
    - Acute Stress Disorder 251
  - Etiology 251
    - Psychosocial Theories 251
    - Biological Theories 253
  - Treatment Options 254
    - Pharmacological Therapy 254
    - Pre-emptive or Prophylactic Treatments 258
    - Herbal Preparations 258
    - Individual Psychotherapy 259
    - Eye Movement Desensitization and Reprocessing 260
    - Biofeedback 260
    - Functional Neurosurgery 260
    - Cognitive Behavioral Therapy 261
    - Exposure Therapies 262
    - Abdominal Breathing 263
    - Progressive Muscle Relaxation 263
    - Exercise 263
    - Guided Imagery 263
    - Music 263
    - Dietary Changes 264
  - Applying the Nursing Process From an Interpersonal Perspective 264
    - Strategies for Optimal Assessment: Therapeutic Use of Self* 264
    - Planning Appropriate Interventions: Meeting the Patient's Focused Needs* 269
    - Implementing Effective Interventions: Timing and Pacing* 270
    - Evaluating: Objective Critique of Interventions and Self-Reflection* 270
14. Personality Disorders 277
- Historical Perspectives 278
  - Epidemiology 279
  - Diagnostic Criteria 279
    - Paranoid Personality Disorder 279
    - Schizoid Personality Disorder 283
    - Schizotypal Personality Disorder 283
    - Antisocial Personality Disorder 283
    - Borderline Personality Disorder 284
    - Histrionic Personality Disorder 284
    - Narcissistic Personality Disorder 284
    - Avoidant Personality Disorder 284
    - Dependent Personality Disorder 284
    - Obsessive-Compulsive Personality Disorder 285
    - Personality Disorders Not Otherwise Specified 285
  - Etiology 285
    - Psychodynamic Theories 285
    - Biological Theories 286
  - Treatment Options 286
    - Psychotherapy 286
    - Cognitive Behavioral Therapy 287
    - Dialectical Behavior Therapy 287
    - Psychopharmacology 287
  - Applying the Nursing Process From an Interpersonal Perspective 289
    - Strategies for Optimal Assessment: Therapeutic Use of Self* 289
    - Diagnosing and Planning Appropriate Interventions: Meeting the Patient's Focused Needs* 295
    - Implementing Effective Interventions: Timing and Pacing* 296
    - Evaluating: Objective Critique of Interventions and Self-Reflection* 300
15. Addictive Disorders 305
- Historical Perspectives 306
  - Epidemiology 307
  - Diagnostic Criteria 307
  - Etiology 309
    - Factors Related to Addiction and Substance Abuse* 311
  - Treatment Options 313
    - 12-Step Programs 313
    - Psychopharmacology 314
    - Psychotherapy 314
    - Detoxification and Rehabilitation 318
  - Applying the Nursing Process From an Interpersonal Perspective 318
    - Strategies for Optimal Assessment: Therapeutic Use of Self* 318
    - Diagnosing and Planning Appropriate Interventions: Meeting the Patient's Focused Needs* 326
    - Implementing Effective Interventions: Timing and Pacing* 326
    - Evaluating: Objective Critique of Interventions and Self-Reflection* 330

16. Cognitive Disorders 337  
 Historical Perspectives 338  
 Epidemiology 339  
 Diagnostic Criteria 339  
*Delirium* 339  
*Dementia* 342  
 Etiology 343  
*Neurobiological Influences* 343  
 Treatment Options 344  
*Psychopharmacology* 345  
*Herbal Remedies* 347  
*Reality Orientation* 347  
*Validation Therapy* 348  
*Reminiscence Therapy* 348  
*Person-Centered Care* 348  
 Applying the Nursing Process From an Interpersonal Perspective 350  
*Strategies for Optimal Assessment: Therapeutic Use of Self* 354  
*Diagnosing and Planning Appropriate Interventions: Meeting the Patient's Focused Needs* 355  
*Implementing Effective Interventions: Timing and Pacing* 357  
*Evaluating: Objective Critique of Interventions and Self-Reflection* 362
17. Impulse Control Disorders 371  
 Historical Perspectives 372  
 Epidemiology 372  
 Diagnostic Criteria 373  
 Etiology 375  
*Psychodynamic Influences* 375  
*Neurobiological Influences* 376  
 Treatment Options 376  
*Nonpharmacological Therapies* 376  
*Pharmacological Therapies* 376  
 Applying the Nursing Process From an Interpersonal Perspective 379  
*Strategies for Optimal Assessment: Therapeutic Use of Self* 379  
*Diagnosing and Planning Appropriate Interventions: Meeting the Patient's Focused Needs* 379  
*Implementing Effective Interventions: Timing and Pacing* 382  
*Evaluating: Objective Critique of Interventions and Self-Reflection* 384
18. Sexual Disorders and Dysfunctions 389  
 Historical Perspectives 390  
 Epidemiology 391  
 Diagnostic Criteria 391  
 Etiology 393  
*Psychodynamic Influences* 393  
*Neurobiological Influences* 395  
 Treatment Options 397  
 Applying the Nursing Process From an Interpersonal Perspective 398  
*Strategies for Optimal Assessment: Therapeutic Use of Self* 399  
*Sexual Health Assessment* 401  
*Diagnosing and Planning Appropriate Interventions: Meeting the Patient's Focused Needs* 404  
*Implementing Effective Interventions: Timing and Pacing* 405  
*Evaluating: Objective Critique of Interventions and Self-Reflection* 407
19. Eating Disorders 411  
 Historical Perspectives 412  
 Epidemiology 412  
 Diagnostic Criteria 414  
*Anorexia Nervosa* 414  
*Bulimia Nervosa* 414  
*Binge Eating Disorder* 414  
 Etiology 416  
*Biological Factors* 416  
*Sociocultural Factors* 416  
*Familial Factors* 416  
*Psychological and Individual Factors* 416  
 Treatment Options 417  
 Applying the Nursing Process From an Interpersonal Perspective 418  
*Strategies for Optimal Assessment: Therapeutic Use of Self* 418  
*Diagnosing and Planning Appropriate Interventions: Meeting the Patient's Focused Needs* 424  
*Implementing Effective Interventions: Timing and Pacing* 425  
*Evaluating: Objective Critique of Interventions and Self-Reflection* 427
20. Psychological Problems of Physically Ill Persons 431  
 Suffering and the Therapeutic Use of Self 432  
*Theoretical Views of Suffering* 432  
*Suffering and the Impact on Nurses* 433  
 Special Issues Related to Mental Health and Physical Illness 434  
*Impact of Stress* 434  
*Loss and Grief* 437  
*Body Image Changes and Stigma* 438  
*Pain and Other Physical Symptoms* 438  
*Anxiety and Depression* 438  
*Delirium* 442

The Nurse's Role in Breaking Bad News	442
End-of-Life Care	445
<i>Conversations About Death and Dying</i>	445
<i>Conversations About Code Status</i>	445
<i>Conversations Involving a Shift From Cure-Driven Care to Palliative Care</i>	446
<i>Conversations About Hospice Care</i>	446
The Role of the Mental Health Liaison/ Consultation Nurse	446
Applying the Nursing Process From an Interpersonal Perspective	446
Strategies for Optimal Assessment: Therapeutic Use of Self	447
<i>Diagnosing and Planning Appropriate Interventions: Meeting the Patient's Focused Needs</i>	447
<i>Implementing Effective Interventions: Timing and Pacing</i>	450
<i>Evaluating: Objective Critique of Interventions and Self-Reflection</i>	451

#### IV. GROWTH AND DEVELOPMENT AND MENTAL HEALTH CONCERNS ACROSS THE LIFE SPAN 455

21. Working With Children	455
Growth and Development Theories	456
<i>Piaget's Theory of Cognitive Development</i>	456
<i>Erikson's Theory of Emotional and Personality Development</i>	457
<i>Freud's Theory of Psychological Development</i>	458
<i>Sullivan's Theory of Interpersonal and Personality Development</i>	459
<i>Behavioral Theories of Pavlov and Skinner</i>	460
Overview of Disorders of Childhood	460
Pervasive Developmental Disorders	460
<i>Autistic Disorder</i>	461
<i>Asperger's Disorder</i>	462
Attention-Deficit and Disruptive Behavior Disorders	464
<i>Attention-Deficit Hyperactivity Disorder</i>	464
<i>Conduct Disorder</i>	465
<i>Oppositional Defiant Disorder</i>	468
Mood Disorders	468
<i>Depression</i>	468
<i>Adjustment Disorder</i>	469
<i>Post-Traumatic Stress Disorder</i>	469
Feeding and Eating Disorders	470
<i>Pica</i>	470
<i>Rumination Disorder</i>	470
<i>Feeding Disorder of Infancy or Early Childhood</i>	471
Treatment Options	472
<i>Play Therapy</i>	472
<i>Behavioral Therapy</i>	472
<i>Cognitive Behavioral Therapy</i>	473
<i>Family Therapy</i>	474
<i>Psychopharmacology</i>	474
<i>Applying the Nursing Process From an Interpersonal Perspective</i>	474
<i>Strategies for Optimal Assessment: Therapeutic Use of Self</i>	476
<i>Diagnosing and Planning Appropriate Interventions: Meeting the Patient's Focused Needs</i>	479
<i>Implementing Effective Interventions: Timing and Pacing</i>	479
<i>Evaluating: Objective Critique of Interventions and Self-Reflection</i>	480
22. Mental Health Concerns Regarding Adolescents	485
Adolescent Development	486
<i>Puberty and Self-Esteem</i>	486
<i>Peer Relationships</i>	486
Adolescent Assessment	487
Common Mental Health Problems in Adolescence	488
<i>Depression</i>	489
<i>Mania</i>	489
<i>Self-Harm</i>	489
<i>Suicide</i>	490
<i>Eating Disorders</i>	491
<i>Substance Misuse and Abuse</i>	491
<i>Attention Deficit Hyperactivity Disorder</i>	492
<i>Conduct Disorders</i>	492
<i>Obsessive-Compulsive Disorder</i>	493
<i>Social Phobia</i>	493
Treatment Options	493
<i>Cognitive Behavioral Therapy</i>	493
<i>Family Therapy</i>	494
<i>Parent Training</i>	494
<i>Group Work</i>	494
<i>Inpatient Care</i>	495
<i>Psychopharmacology</i>	495
Applying the Nursing Process From an Interpersonal Perspective	496
<i>Strategies for Optimal Assessment: Therapeutic Use of Self</i>	496
<i>Diagnosing and Planning Appropriate Interventions: Meeting the Adolescent's Focused Needs</i>	496
<i>Implementing Effective Interventions: Timing and Pacing</i>	496

*Evaluating: Objective Critique of Interventions and Self-Reflection* 498

## 23. Issues Specific to the Elderly 503

### Overview of the Elderly Population 504

*Quality of Life* 504

*Medicare* 504

### Factors influencing Mental Health in the

*Aging Population* 504

*Physical Changes* 505

*Chronic Illness* 505

*Pain* 505

*Insomnia* 506

*Disabilities and Handicaps* 507

*Stress and Change* 507

*Loss* 507

*Family Coping* 507

*Loneliness* 508

*Abuse and Neglect* 509

*Culture and Spirituality* 509

### Common Mental Health Problems

*Associated With the Elderly* 509

*Depression in the Elderly* 509

*Generalized Anxiety Disorder in the Elderly* 513

*Mood Disorders in the Elderly* 514

*Substance Use and Abuse and the Elderly* 514

### Palliative and End-of-Life Issues With Mentally

*Impaired Elders* 514

### Trends in Mental Health Care for the

*Elderly* 515

*Acute Care* 515

*Outpatient Services* 516

### Applying the Nursing Process From an

*Interpersonal Perspective* 517

*Strategies for Optimal Assessment: The Therapeutic*

*Use of Self* 517

*Diagnosing and Planning Appropriate*

*Interventions: Meeting the Patient's*

*Focused Needs* 518

*Implementing Effective Interventions:*

*Timing and Pacing* 520

*Evaluating: Objective Critique of Interventions and*

*Self-Reflection* 520

## 24. Victims and Victimizers 527

### Types of Abuse 528

*Physical Abuse* 528

*Sexual Abuse* 528

*Emotional or Psychological Abuse* 528

*Economic Abuse* 529

### Historical Perspectives 529

### Epidemiology 530

*Child Abuse* 530

*Intimate Partner Violence* 531

*Elder Abuse* 531

### Etiology 531

*Child Abuse* 532

*Intimate Partner Violence* 532

*Elder Abuse* 533

### Patterns of Violence 533

*The Cycle of Violence* 533

*Cycle of Abuse* 534

*The Power and Control Wheel* 534

### Nursing Responsibilities From an

*Interpersonal Perspective* 534

*Child Abuse* 535

*Intimate Partner Violence* 537

*Elder Abuse* 543

## V. MENTAL HEALTH CARE SETTINGS 549

### 25. Psychiatric-Mental Health Nursing Across the Continuum of Care 549

#### Psychiatric-Mental Health Nursing Across the

*Continuum of Care* 550

*Goal of the Least Restrictive Environment* 550

*Consultation-Liaison Services* 550

#### Levels of Care 551

*Psychiatric Emergency Care* 551

*Acute Inpatient Care* 551

*Intermediate/Long-Term Inpatient Care* 552

*Partial Hospitalization/Day Treatment* 552

*Residential Services* 552

*Community-Based Care* 553

*Nursing Homes* 554

*Outpatient Care* 554

*Home Care* 555

*Primary Care* 555

#### Housing Services 555

*Personal Care Homes* 555

*Supervised Apartments* 556

*Therapeutic Foster Care* 556

*Halfway House/Sober House* 556

#### The Continuum of Ambulatory Behavioral

*Health Services* 556

#### Specialized Roles of PMHNs Within the

*Continuum of Care* 557

*Self-Employment* 557

*Telehealth* 558

*Case Management* 559

*Disaster Response* 563

*Forensic Nursing* 563



26. **Vulnerable Populations and the Role of the Forensic Nurse** 567
- Children and Mental Health and Illness** 568
    - Nurse's Role When Working With Children* 569
  - Aging Individuals and Mental Health and Illness** 569
    - Nurse's Role When Working With the Elderly* 569
  - Minority Groups and Mental Health and Illness** 570
    - Nurse's Role When Working With Minority Groups* 571
  - Individuals With Intellectual Disabilities and Mental Health and Illness** 571
    - Nurse's Role When Working With Individuals With Intellectual Disabilities* 571
  - The Homeless and Mental Health and Illness** 571
    - Impact on Mental Health* 572
    - Nurse's Role When Working With the Homeless Population* 572
  - Individuals Who Are Incarcerated and Mental Health and Illness** 573
    - Impact of Incarceration on Mental Health* 573
    - Nurse's Role When Working With Incarcerated Patients* 573
  - Forensic Nursing** 575
    - Educational Preparation* 575
    - Roles of the Forensic Nurse* 576
- VI. CULTURAL, ETHICAL, LEGAL, AND PROFESSIONAL ASPECTS OF MENTAL HEALTH CARE** 581
27. **Cultural, Ethnic, and Spiritual Concepts** 581
- Core Concepts** 582
  - Globalization and Health Care Disparities** 582
  - Race, Ethnicity, and Culture and Mental Health** 583
    - Racial, Ethnic, and Cultural Diversity* 583
    - Language Variations* 584
    - Gender Roles and Expectations* 584
    - Immigration* 585
    - Mental Health, Mental Illness, and Mental Health Service Use Among Ethnic, Racial, and Cultural Groups* 585
    - Implications for Psychiatric-Mental Health Nursing* 587
  - Spirituality, Religion, and Mental Health** 588
    - Influence on Coping* 588
    - Influence on the Etiology of Mental Illness* 588
    - Influence on Mental Illness Symptomatology* 589
  - Barriers to Mental Health Services** 589
    - Overcoming Barriers* 589
    - Correlation to Other Cultures* 591
    - Implications for Psychiatric-Mental Health Nursing* 591
  - Culturally Competent and Congruent Care** 591
28. **Ethical and Legal Principles** 597
- Ethics** 598
    - Ethical Theories and Principles* 598
    - Model for Ethical Decision Making* 600
  - Legal Issues** 602
    - Bill of Rights for Mental Health Patients* 602
    - Voluntary and Involuntary Admission* 602
    - Competency* 603
    - Least Restrictive Environment* 604
    - Restraints and Seclusion* 605
  - Nursing Responsibilities** 606
    - Confidentiality* 607
    - Legal Liability* 607
29. **Policy, Policy Making, and Politics for Professional Psychiatric Nurses** 611
- An Overview of How Policy Is Made** 612
    - Theory Building and Policy Generation* 613
    - Nursing's Political Roots* 614
  - Ideologies, Facts, and Politics** 614
    - The Politics of Communication* 615
    - Federal Legislators, New Laws, and Health Policies* 616
  - Legislation, Law, and Regulations** 617
  - The Future of (Psychiatric) Nursing** 619
  - The Future of Baccalaureate Education for Psychiatric Nurses** 620
- Appendix: **NANDA-I Nursing Diagnoses 2009–2011** 625
- Glossary 629
- NCLEX Review 639
- Answers to NCLEX PREP Questions* 639
  - NCLEX Review Questions* 640
  - Answers to NCLEX Review Questions* 656
- Index 657