

25TH EDITION

Williams OBSTETRICS

CUNNINGHAM

LEVENO

BLOOM

DASHE

HOFFMAN

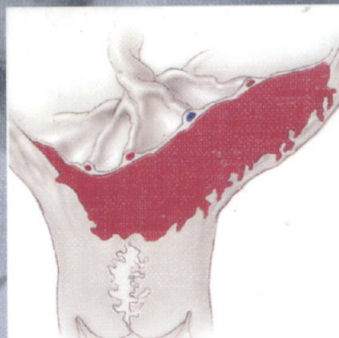
CAS
SPO

Williams obstetrics/ F.
WQ100 C973W 2018



B0001151
bib:13399115449

**Mc
Graw
Hill**
Education



CONTENTS

Preface	xiii
Acknowledgments	xv

SECTION 1

OVERVIEW

1. Overview of Obstetrics	2
---------------------------------	---

SECTION 2

MATERNAL ANATOMY AND PHYSIOLOGY

2. Maternal Anatomy	14	4. Maternal Physiology	49
3. Congenital Genitourinary Abnormalities	33		

SECTION 3

PLACENTATION, EMBRYOGENESIS, AND FETAL DEVELOPMENT

5. Implantation and Placental Development	80	7. Embryogenesis and Fetal Development	124
6. Placental Abnormalities	111		

SECTION 4

PRECONCEPTIONAL AND PRENATAL CARE

8. Preconceptional Care	146	9. Prenatal Care	157
-------------------------------	-----	------------------------	-----

SECTION 5

THE FETAL PATIENT

10. Fetal Imaging.....	182	14. Prenatal Diagnosis.....	277
11. Amniotic Fluid	225	15. Fetal Disorders	300
12. Teratology, Teratogens, and Fetotoxic Agents	234	16. Fetal Therapy.....	315
13. Genetics.....	253	17. Fetal Assessment	331

SECTION 6

EARLY PREGNANCY COMPLICATIONS

18. Abortion	346	20. Gestational Trophoblastic Disease.....	388
19. Ectopic Pregnancy.....	371		

SECTION 7

LABOR

21. Physiology of Labor.....	400	25. Obstetrical Analgesia and Anesthesia	485
22. Normal Labor.....	421	26. Induction and Augmentation of Labor	503
23. Abnormal Labor	441		
24. Intrapartum Assessment	457		

SECTION 8

DELIVERY

27. Vaginal Delivery	516	30. Cesarean Delivery and Peripartum Hysterectomy	567
28. Breech Delivery	539	31. Prior Cesarean Delivery	591
29. Operative Vaginal Delivery	553		

SECTION 9

THE NEWBORN

32. The Newborn	606	34. The Preterm Newborn	636
33. Diseases and Injuries of the Term Newborn	619	35. Stillbirth	644

SECTION 10

THE PUERPERIUM

36. The Puerperium	652	38. Contraception	680
37. Puerperal Complications	666	39. Sterilization	702

SECTION 11

OBSTETRICAL COMPLICATIONS

40. Hypertensive Disorders	710	43. Postterm Pregnancy	835
41. Obstetrical Hemorrhage	755	44. Fetal-Growth Disorders	844
42. Preterm Birth	803	45. Multifetal Pregnancy	863

SECTION 12

MEDICAL AND SURGICAL COMPLICATIONS

46. General Considerations and Maternal Evaluation	900	56. Hematological Disorders	1075
47. Critical Care and Trauma	915	57. Diabetes Mellitus	1097
48. Obesity	936	58. Endocrine Disorders	1118
49. Cardiovascular Disorders	948	59. Connective Tissue Disorders	1138
50. Chronic Hypertension	975	60. Neurological Disorders	1156
51. Pulmonary Disorders	987	61. Psychiatric Disorders	1173
52. Thromboembolic Disorders	1004	62. Dermatological Disorders	1184
53. Renal and Urinary Tract Disorders	1025	63. Neoplastic Disorders	1190
54. Gastrointestinal Disorders	1042	64. Infectious Diseases	1209
55. Hepatic, Biliary, and Pancreatic Disorders	1058	65. Sexually Transmitted Infections	1235

APPENDIX

Serum and Blood Constituents	1255	Fetal Sonographic Measurements	1262
Maternal Echocardiographic Measurements	1261	Index	1273