

25TH EDITION

Williams OBSTETRICS

STUDY GUIDE

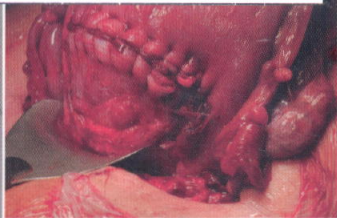
PATEL
ROBERTS
ROGERS
ZINK
DURYE
MORG

Williams obstetrics stu
WQ100 P295W 2019



B0001152
bib:13399115450

**Mc
Graw
Hill**
Education



CONTENTS

Preface..... ix

SECTION 1

OVERVIEW

1. Overview of Obstetrics..... 2

SECTION 2

MATERNAL ANATOMY AND PHYSIOLOGY

2. Maternal Anatomy..... 8	4. Maternal Physiology 21
3. Congenital Genitourinary Abnormalities 14	

SECTION 3

PLACENTATION, EMBRYOGENESIS, AND FETAL DEVELOPMENT

5. Implantation and Placental Development 30	7. Embryogenesis and Fetal Développement 45
6. Placental Abnormalities 37	

SECTION 4

PRECONCEPTIONAL AND PRENATAL CARE

8. Preconceptional Care	52	9. Prenatal Care	58
-------------------------------	----	------------------------	----

SECTION 5

THE FETAL PATIENT

10. Fetal Imaging	66	14. Prenatal Diagnosis.....	94
11. Amnionic Fluid.....	73	15. Fetal Disorders.....	101
12. Teratology, Teratogens, and Fetotoxic Agents	82	16. Fetal Therapy	108
13. Genetics.....	88	17. Fetal Assessment	114

SECTION 6

EARLY PREGNANCY COMPLICATIONS

18. Abortion.....	122	20. Gestational Trophoblastic Disease.....	135
19. Ectopic Pregnancy.....	129		

SECTION 7

LABOR

21. Physiology of Labor	144	25. Obstetrical Analgesia and Anesthesia	168
22. Normal Labor.....	150	26. Induction and Augmentation of Labor	175
23. Abnormal Labor	156		
24. Intrapartum Assessment.....	162		

SECTION 8

DELIVERY

27. Vaginal Delivery	182	30. Cesarean Delivery and Peripartum Hysterectomy.....	200
28. Breech Presentation	187	31. Prior Cesarean Delivery	207
29. Operative Vaginal Delivery	195		

SECTION 9

THE NEWBORN

32. The Newborn Infant.....	214	34. The Preterm Newborn	228
33. Diseases and Injuries of the Term Newborn	222	35. Stillbirth	234

SECTION 10

THE PUERPERIUM

36. The Puerperium	242	38. Contraception	254
37. Puerperal Complications	248	39. Sterilization	262

SECTION 11

OBSTETRICAL COMPLICATIONS

40. Hypertensive Disorders	268	43. Postterm Pregnancy.....	289
41. Obstetrical Hemorrhage	275	44. Fetal-Growth Disorders	295
42. Preterm Birth	283	45. Multifetal Gestation	300

SECTION 12**MEDICAL AND SURGICAL COMPLICATIONS**

46. General Considerations and Maternal Evaluation.....	308	56. Hematological Disorders	365
47. Critical Care and Trauma.....	312	57. Diabetes Mellitus.....	372
48. Obesity.....	319	58. Endocrine Disorders.....	378
49. Cardiovascular Disorders.....	324	59. Connective Tissue Disorders	384
50. Chronic Hypertension	331	60. Neurological Disorders	388
51. Pulmonary Disorders	338	61. Psychiatric Disorders	395
52. Thromboembolic Disease.....	343	62. Dermatological Disorders.....	400
53. Renal and Urinary Tract Disorders	348	63. Neoplastic Disorders	405
54. Gastrointestinal Disorders.....	353	64. Infectious Diseases.....	412
55. Hepatic, Biliary, and Pancreatic Disorders	359	65. Sexually Transmitted Infections	418
Index			425