



Enhanced
**DIGITAL
VERSION**
Included.
Details inside.

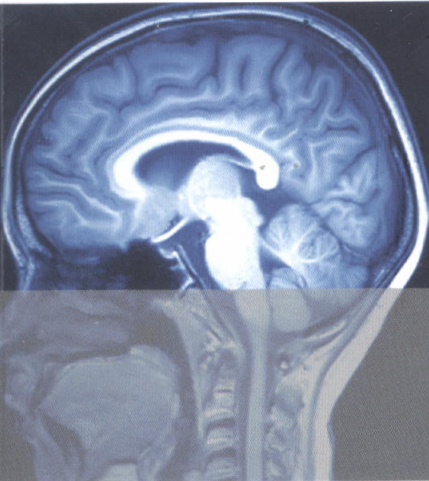
5

edition

CRASH COURSE

Series Editors: **Philip Xiu & Shreelata Datta**
Faculty Advisor: **Steven Birrell**

Psychiatry



Marwick

Crash course psychiatry
WM140 M298C 2019



B0001162
bib:13399115460

... syllabus in one place
... revision time
... students and junior doctors
... what is essential for exam success
... leading Faculty Advisors
... the accuracy of information

- ✓ Updated self-assessment section matching the latest exam formats – confirm your understanding and improve exam technique fast
- ✓ Comes with an enhanced, interactive eBook – for efficient learning on the go

ELSEVIER

Series Editors' foreword	v	Patient management following self-harm or attempted suicide	56
Preface	vi	Discussion of case study	56
Acknowledgements	vii	7 The patient with impairment of consciousness, memory or cognition	59
Dedication	viii	Definitions and clinical features	59
Series Editors' acknowledgements	ix	Common cognitive disorders	61
Section 1 General	1	Differential diagnosis	66
1 Psychiatric assessment and diagnosis	3	Assessment	69
Interview technique	3	Discussion of case study	70
Psychiatric history	4	8 The patient with alcohol or substance use problems	73
Mental state examination	7	Definitions and clinical features	73
Risk assessment	9	Alcohol-related disorders	75
Physical examination	10	Alcohol-related cognitive disorders	78
The formulation: presenting the case	10	Other substance-related disorders	80
Classification in psychiatry	12	Differential diagnosis	80
2 Pharmacological therapy and electroconvulsive therapy	15	Assessment	83
Antidepressants	15	Discussion of case study	84
Mood stabilizers	19	Further reading	85
Antipsychotics	21	9 The patient with psychotic symptoms	87
Anxiolytic and hypnotic drugs	25	Definitions and clinical features	87
Other drugs used in psychiatry	27	Differential diagnosis	93
Electroconvulsive therapy	27	Algorithm for the diagnosis of psychotic disorders	96
3 Psychological therapy	29	Assessment	96
Psychotherapeutic approaches	29	Discussion of case study	97
Indications for psychological therapy	35	10 The patient with elated or irritable mood	99
4 Mental health and the law	37	Definitions and clinical features	99
Mental Health Act 1983 as amended by the Mental Health Act 2007	37	Differential diagnosis	101
Mental Health (Care & Treatment) (Scotland) Act 2003	39	Assessment	103
Mental Health (Northern Ireland) Order 1986	41	Algorithm for the diagnosis of mood disorders	104
Capacity to consent to treatment	41	Discussion of case study	104
Common law	43	11 The patient with low mood	107
Human rights legislation	43	Definitions and clinical features	107
Fitness to drive	44	Differential diagnosis	109
5 Mental health service provision	47	Assessment	111
History	47	Discussion of case study	112
Primary care	47	12 The patient with anxiety, fear or avoidance	115
Secondary care	47	Definitions and clinical features	115
Section 2 Presenting Complaints	51	Differential diagnosis	116
6 The patient with thoughts of suicide or self-harm	53	Assessment	120
Definitions and clinical features	53	Discussion of case study	120
Assessment of patients who have inflicted harm upon themselves	53	13 The patient with obsessions and compulsions	123
		Definitions and clinical features	123

Contents

Differential diagnosis.....	124	24 Eating disorders	205
Discussion of case study	127	Anorexia and bulimia nervosa.....	205
14 The patient with a reaction to a stressful event	129	25 The sleep-wake disorders	209
Definitions and clinical features	129	Definitions and classification	209
Bereavement.....	133	Further reading.....	214
Differential diagnosis.....	133	26 The psychosexual disorders	215
Discussion of case study	134	Sexual dysfunction.....	215
Further reading.....	134	Disorders of sexual preference (paraphilias).....	219
15 The patient with medically unexplained		Gender identity.....	219
physical symptoms	135	27 Disorders relating to the menstrual cycle,	
Definitions and clinical features	135	pregnancy and the puerperium	221
Differential diagnosis.....	137	Premenstrual syndrome.....	221
Assessment.....	139	Menopause	221
Discussion of case study	139	Psychiatric considerations in pregnancy	222
16 The patient with eating or weight problems	141	Puerperal disorders.....	223
Definitions and clinical features	141	28 The personality disorders	227
Assessment.....	142	The personality disorders.....	227
Differential diagnosis of patients with low weight.....	145	29 The neurodevelopmental disorders	231
Discussion of case study	145	Intellectual disability.....	231
17 The patient with personality problems	147	Autism spectrum disorders.....	232
Definitions and clinical features	147	Attention deficit hyperactivity disorders	233
Classification.....	147	Tourette syndrome	235
Assessment.....	149	30 Child and adolescent psychiatry	237
Differential diagnosis.....	150	Child and Adolescent Mental Health	
Discussion of case study	151	Services.....	237
18 The patient with neurodevelopmental problems	153	Attachment.....	237
Definitions	153	Epidemiology	237
Clinical features and differential diagnosis	154	Mental illness in children and adolescents	239
Assessment.....	160	Child abuse	242
Discussion of case study	162	Assessment considerations in young people	242
		Further reading.....	243
Section 3 Cause and management	163	31 Older adult psychiatry	245
19 Dementia and delirium	165	Mental illness in older adults.....	245
Dementia.....	165	Assessment considerations in older adults	247
Delirium.....	170	Treatment considerations in older adults.....	248
20 Alcohol and substance-related disorders	173	32 Forensic psychiatry	251
Alcohol disorders	173	Mental disorder and crime	251
Other psychoactive substances	178	Assessing and managing risk of violence.....	252
21 The psychotic disorders: schizophrenia	183	Considerations in court proceedings.....	253
Schizophrenia	183	Self-Assessment	255
22 The mood (affective) disorders	191	Single best answer (SBA) questions	257
Depressive disorders	191	Extended-matching questions (EMQs)	275
Bipolar affective disorder	194	SBA answers	297
Dysthymia and cyclothymia.....	196	EMQ answers	311
23 The anxiety and somatoform disorders	199	Glossary	329
Anxiety disorders	199	Index	331
Dissociative and somatoform disorders	203		